

**Getting Started in Implementation Research:**  
*Key Considerations for Determining Focus,  
Questions, Methodology, & Funding*

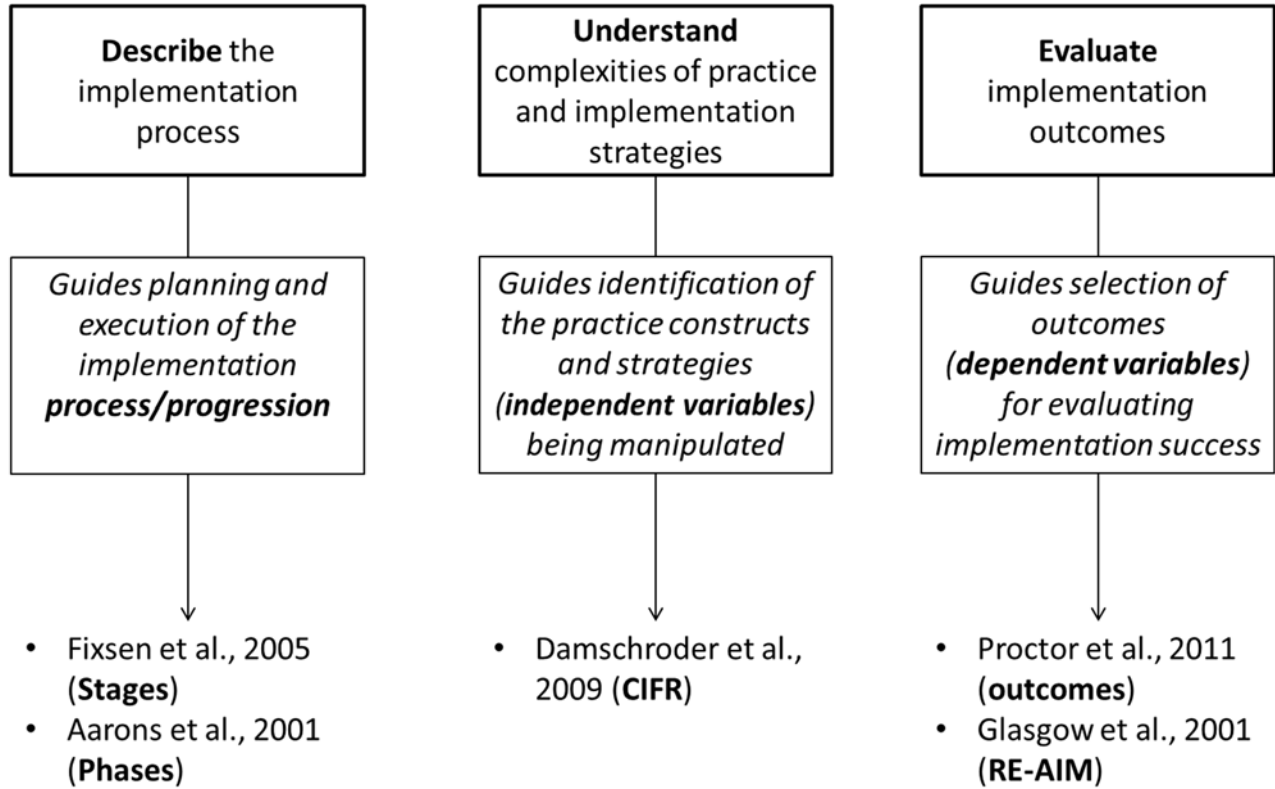
SRCLD Preconference Tutorial  
June 8, 2017  
Madison, WI

Lesley Olswang  
[lolswang@uw.edu](mailto:lolswang@uw.edu)

Julie Feuerstein  
[Feuerstein@kennedykrieger.org](mailto:Feuerstein@kennedykrieger.org)

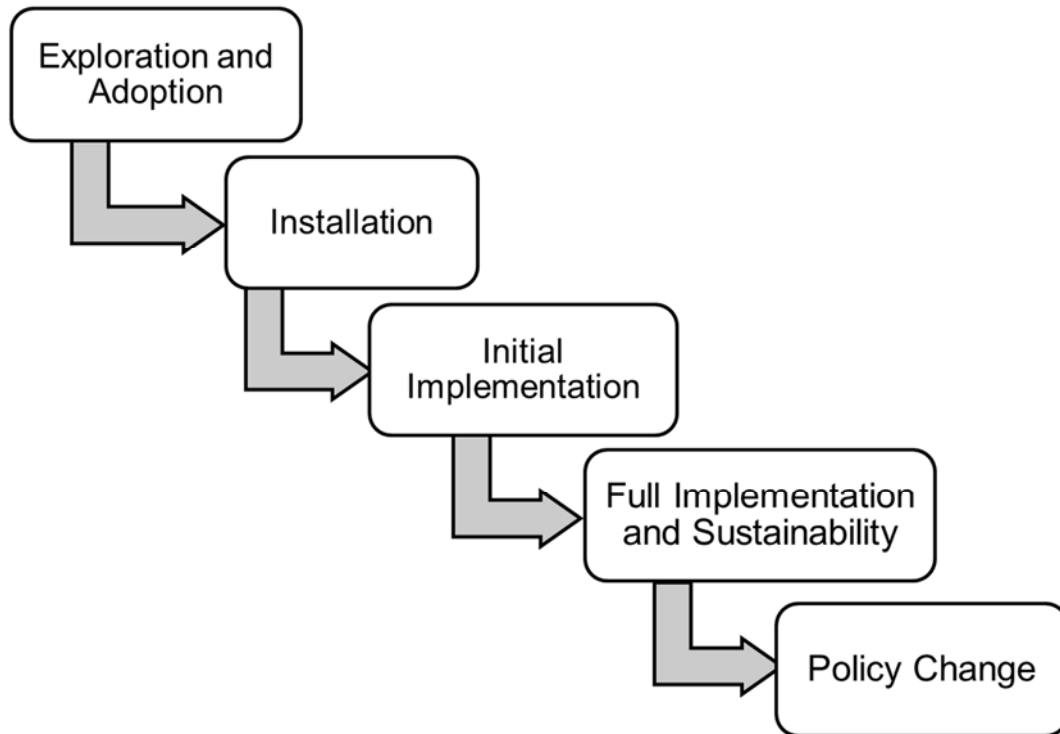
# Implementation Science Frameworks

(Adapted from Nilsen, 2015)



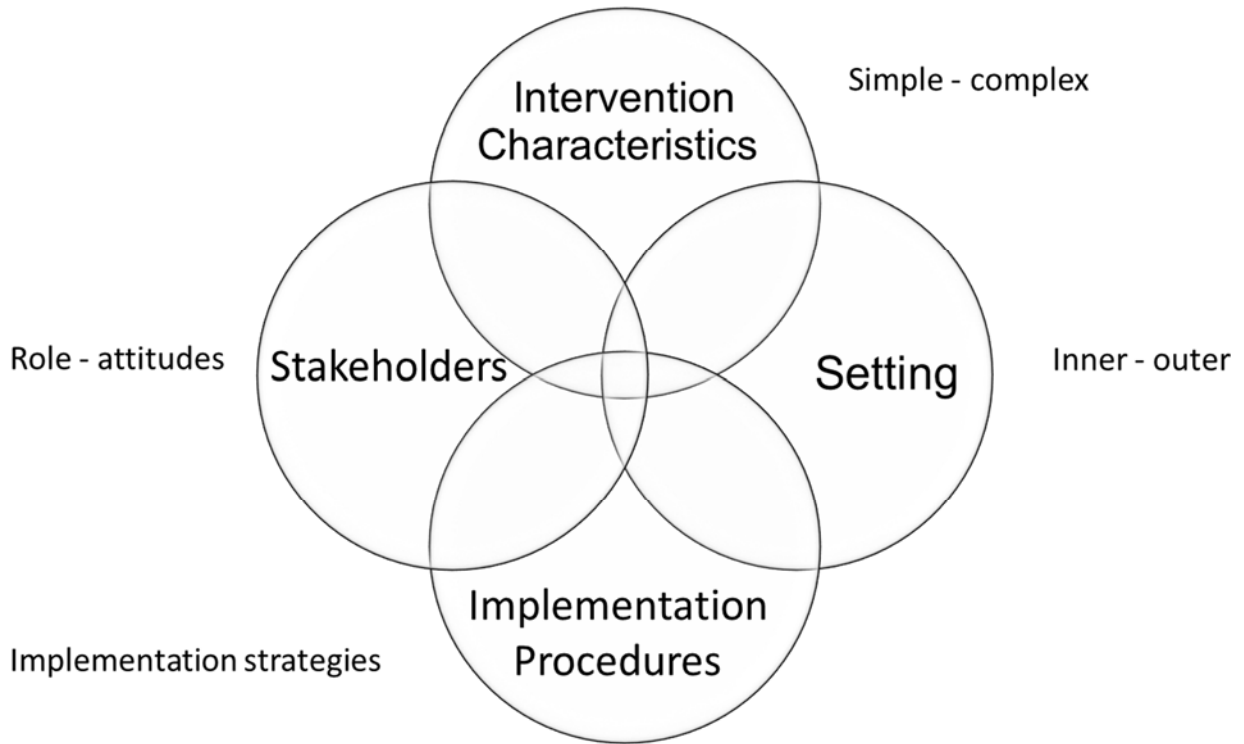
## Implementation Process

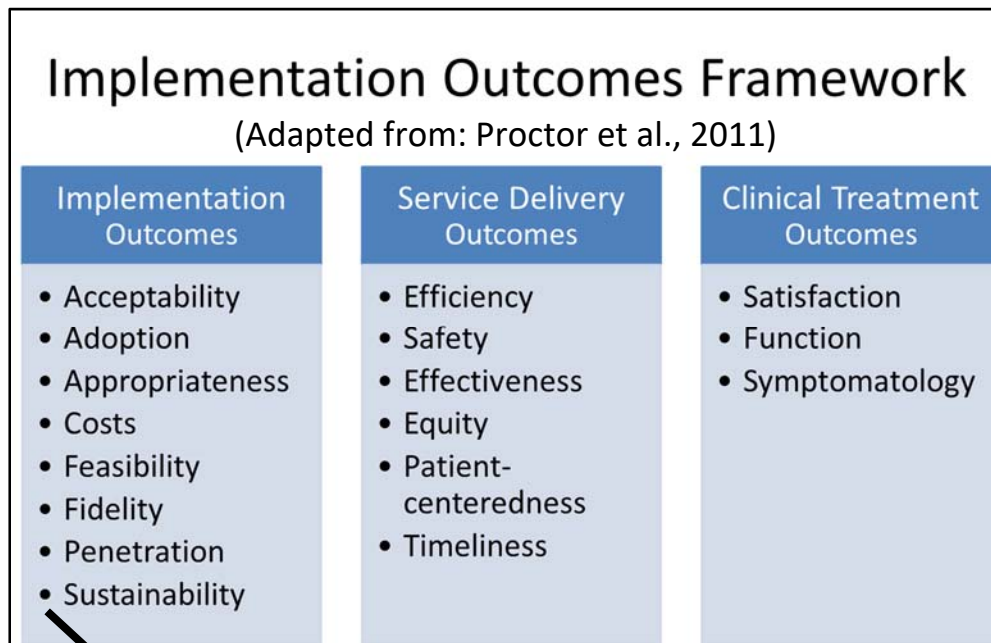
(Adapted from Fixsen's Implementation Stages, Fixsen et al., 2005)



## Complexities of Implementation

(Implementation constructs adapted from Consolidated Framework for Implementation Research; CFIR; Damschroder et al., 2009)





Outcome	Definition	Available Measurement
<b>Acceptability</b>	Satisfaction with aspects of the innovation	Surveys, interview, administrative data
<b>Adoption</b>	Uptake, utilization, intention to try	Administrative data, observation, interview, survey
<b>Appropriateness</b>	Perceived fit-relevance, compatibility	Survey, interview, focus groups
<b>Cost</b>	Dollar amount of implementation efforts	Administrative data
<b>Feasibility</b>	Actual fit, suitability for everyday practice	Survey, administrative data
<b>Fidelity</b>	Delivered as intended (accuracy, quality, dose)	Observation, checklist, self-report
<b>Penetration</b>	Degree of spread in practice, organization	Case audit, checklist
<b>Sustainability</b>	Maintenance, durability, routinization	Case audit, interviews, questionnaires, checklists

## **Successful Research Collaborations**

### **Five Basic Rules**

(Heaton et al., 2015)

1. Base research on co-production between researchers and stakeholders at all stages in the design and execution of research
2. Establish small strategic teams led by strong facilitative leaders
3. Harness and develop respective assets
4. Promote relational adaptive capacity
5. Remember-the end user is king/queen!

## Key Questions for Getting Started



### Significance

- What is the care gap you want to fill?

---

---

---

---

- What is the science gap you want to fill?

---

---

---

---

### Research Focus/Aims/Research Question(s)

- Where are you in the implementation process?

---

---

---

---

- Which implementation constructs are you interested in?

---

---

---

---

- What will be your primary/secondary outcome measures?

---

---

---

**Design**

- What kind of data will you collect?

---

---

---

---

- Which type of design fits the data?

---

---

---

---

**Intervention Characteristics**

- What are the characteristics of the intervention you wish to implement (adaptability, trialability, complexity, cost, strength of evidence, etc.)?

---

---

---

---

- How is the intervention perceived by stakeholders (source, advantage, packaging, etc.)?

---

---

---

---



**Stakeholders/Participants**

- Who are YOUR stakeholders?

---

---

---

---

- When and how might you engage them in your implementation efforts?

---

---

---

---

**Setting/Context**

- Where will your implementation efforts take place?

---

---

---

---

- How would you describe the outer setting of your implementation study?

---

---

---

---

- How would you describe the inner setting of your implementation study?

---

---

---

---

**Strategies (Independent Variables)**

- What are you hoping to change?

---

---

---

---

- What implementation strategies will you use?

---

---

---

---

**Measurement (Dependent Variables)**

- Which implementation outcomes are most relevant to your research questions?

---

---

---

---

- Do measures currently exist to evaluate the outcomes of interest?

---

---

---

---

- Are there other outcomes (service delivery, client) that you might also measure?

---

---

---

---

**Environment/Resources/Team**

- Who is your community partner?

---

---

---

---

- Who is on your team? What are the roles of the team members?

---

---

---

---

- What are your plans for meeting and making decisions?

---

---

---

---

**Sustainability and Spread**

- Where are you going in your research program? What's next? (consider expanding impact)

---

---

---

---

- What are appropriate funding sources?

---

---

---

---

### Resources

- Implementation Science Journal (online, open access)  
<http://implementationscience.biomedcentral.com/>
- Consolidated Framework for Implementation Research (CFIR)  
<http://www.cfirguide.org/>
- Society for Implementation Research Collaboration (SIRC)  
<https://societyforimplementationresearchcollaboration.org/>
- Research Toolkit  
<http://researchtoolkit.org/>
- Find the appropriate framework for your work:  
<http://dissemination-implementation.org>
- NCI's Advanced Topic in Implementation Science Webinars & Fireside Chats (YouTube Channel of archived presentations)  
<https://www.youtube.com/watch?v=yigb85r91yg>
- Interview Guide Tool for Qualitative Research in Implementation Science  
<http://www.cfirguide.org/guide/app/index.html>
- ASHA Clinicians and Researchers Collaborating (CLARC)  
<http://www.asha.org/academic/CLARC/>

### **Funding Sources**

- American Speech-Language-Hearing Foundation (ASHF)  
<https://www.ashfoundation.org/grants/default.htm>
- Patient Centered Outcome Research (PCORI)  
<http://www.pcori.org/funding-opportunities>
- Agency for Health Care Research and Quality (AHRQ)  
<http://www.ahrq.gov/funding/fund-opps/index.html>
- National Institutes of Health  
<http://grants.nih.gov/grants/guide/pa-files/PAR-13-055.html>
- Institute of Educational Science (IES)  
<https://ies.ed.gov>
- IES National Center for Special Education Research (NCSER)  
<https://ies.ed.gov/ncser/>
- Veterans Affairs (VA) Center for Implementation Practice and Research Support (CIPRS)  
<http://www.queri.research.va.gov/ciprs/training.cfm>

## References

- Aarons, G. A., Hurlburt, M., & Horwitz, S. (2011). Advancing a conceptual model of evidence-based practice implementation in public service sectors. *Administration and Policy in Mental Health, 38*, 4-23.
- Buchanan, D., Fitzgerald, L., & Ketley, D. (2007). *The sustainability and spread of organizational change: modernizing healthcare*. New York, NY: Routledge.
- Campbell, W. & Douglas, N. (In press). Supporting evidence-based practice in Speech-Language Pathology: A review of implementation strategies for promoting health professional behavior change. *Evidence-Based Communication Assessment and Intervention*.
- Creswell, J. W. (2014). *A concise introduction to mixed methods research*. Sage Publications.
- Crooke, P., & Olswang, L. (2015). Practice-based research: another pathway for closing the research-practice gap. *Journal of Speech, Language, Hearing Research, 58*, 1871-1882.
- Curran, G. M., Bauer, M., Mittman, B., Pyne, J. M., & Stetler, C. (2012). Effectiveness-implementation hybrid designs: combining elements of clinical effectiveness and implementation research to enhance public health impact. *Medical care, 50*(3), 217.
- Damschroder, L. J., Aron, D. C., Keith, R. E., Kirsh, S. R., Alexander, J. A., & Lowery, J. C. (2009). Fostering implementation of health services research findings into practice: a consolidated framework for advancing implementation science. *Implementation Science, 4*(1), 50.
- Epstein, I. (2009). *Clinical data-mining: Integrating practice and research*. New York, NY: Oxford University Press.
- Epstein, I. (2011). Reconciling evidence-based practice, evidence-informed practice, and practice-based research: The role of clinical data-mining. *Social Work, 56*(3), 284-288.
- Feuerstein, J., Olswang, L., Greenslade, K., Pinder, G.L., Dowden, P., & Madden, J. (2017). Moving triadic gaze intervention into practice: measuring clinician attitude and implementation fidelity. *Journal of Speech, Language, Hearing Research*.
- Glasgow, R. E., McKay, H. G., Piette, J. D., & Reynolds, K. D. (2001). The RE-AIM framework for evaluating interventions: what can it tell us about approaches to chronic illness management?. *Patient education and counseling, 44*(2), 119-127.
- Grol, G., Wensing, M., Eccles, M., & Davis, D. (2013). *Improving patient care: The implementation of change in health care*. Oxford, United Kingdom: Wiley.
- Green, L. (2008). Making research relevant: if it's an evidence-based practice, where is the practice-based evidence? *Family Practice, 25*, 20-24.
- Heaton, J., Day, J., & Britten, N. (2015). Inside the "black box" of a knowledge translation program in applied health research. *Qualitative Health Research, 25*(1), 1455-1491.
- Kirk, M. A., Kelley, C., Yankey, N., Birken, S. A., Abadie, B., & Damschroder, L. (2016). A systematic review of the use of the Consolidated Framework for Implementation Research. *Implementation Science, 11*(1), 72.
- Lewis, C. C., Stanick, C. F., Martinez, R. G., Weiner, B. J., Kim, M., Barwick, M., & Comtois, K. A. (2015). The society for implementation research collaboration instrument review project: a methodology to promote rigorous evaluation. *Implementation Science, 10*(1), 2.
- Lewis, C. C., Fischer, S., Weiner, B. J., Stanick, C., Kim, M., & Martinez, R. G. (2015). Outcomes for implementation science: an enhanced systematic review of instruments using evidence-based rating criteria. *Implementation Science, 10*(1), 155.
- Lindamer, L., Lebowitz, B., Hough, R., Piedad, G., Aguirre, A., Halpain, M.,...Jeste, D. (2009). Establishing an implementation network: lessons learned from community-based participatory research. *Implementation Science, 4*:17.

- Nilsen, P. (2015). Making sense of implementation theories, models and frameworks. *Implementation Science*, 10(1), 53.
- Olswang, L. & Goldstein, H. (In press). Collaborating on the Development and Implementation of Evidence-Based Practices: Advancing Science and Practice. *Evidence-based Communication Assessment and Intervention*.
- Olswang, L. B., & Prelock, P. A. (2015). Bridging the gap between research and practice: Implementation science. *Journal of Speech, Language, and Hearing Research*, 58(6), S1818-S1826.
- Palinkas, L. A., Aarons, G. A., Horwitz, S., Chamberlain, P., Hurlburt, M., & Landsverk, J. (2011). Mixed method designs in implementation research. *Administration and Policy in Mental Health and Mental Health Services Research*, 38(1), 44-53.
- Powell, B. J., Waltz, T. J., Chinman, M. J., Damschroder, L. J., Smith, J. L., Matthieu, M. M., ... & Kirchner, J. E. (2015). A refined compilation of implementation strategies: results from the Expert Recommendations for Implementing Change (ERIC) project. *Implementation Science*, 10(1), 21.
- Proctor, E., Silmere, H., Raghavan, R., Hovmand, P., Aarons, G., Bunger, A., ... & Hensley, M. (2011). Outcomes for implementation research: conceptual distinctions, measurement challenges, and research agenda. *Administration and Policy in Mental Health and Mental Health Services Research*, 38(2), 65-76.
- Proctor, E., Powell, B., Baumann, A., Hamilton, A., & Santens, R. (2012). Writing implementation research grant proposals: ten key ingredients. *Implementation Science*, 7:96. <http://www.implementationscience.com/content/7/1/96>
- Proctor, E., Powell, B., & McMillen, J. C. (2013). Implementation strategies: recommendations for specifying and reporting. *Implementation Science*, 8:139. <http://www.implementationscience.com/content/8/1/139>
- Robey, R. (2004). A five-phase model for clinical-outcome research. *Journal of Communication Disorders*, 37, 401-411.
- Schliep, M., Alonzo, C., & Morris, M. (in press). Beyond RCTs: Innovations in research design and methods to advance implementation science. *Evidence-Based Communication Assessment and Intervention*.
- Stirman, S., Kimberly, J, Cook, N., Calloway, A., Castro, F. & Charns, M. (2012). The sustainability of new programs and innovations: a review of the empirical literature and recommendations for future research. *Implementation Science*, 7:17. <http://www.implementationscience.com/content/7/1/17>